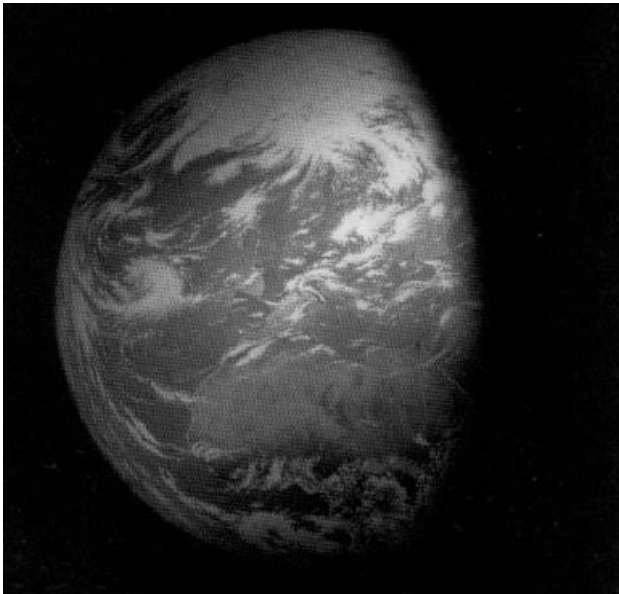


Q1. The Earth



| |
|-----------------------|
| Y5 Earth and Space |
| Date: |
| Name: |
| |
| Score: ____ out of 17 |

Complete the following sentences.

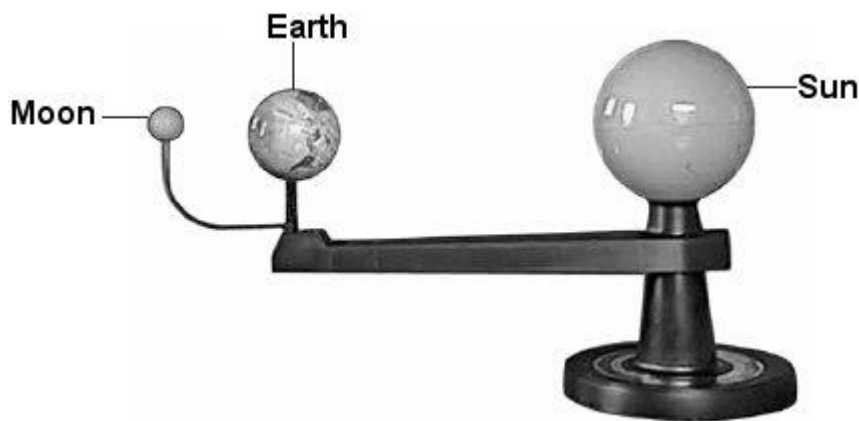
✍️ The Earth spins on its axis once every hours. 1 mark

The half of the Earth facing away from the Sun is in 1 mark

It takes about 365 days for the Earth to orbit the 1 mark

Q2. The Earth, Moon and Sun

(a) The picture below shows a model of the Earth, Moon and Sun.



✍️ Tick **ONE** box to show the shape of the Earth, Moon and Sun in space. 1 mark

cylinder

sphere

oval

circle

| |
|----|
| /4 |
|----|

(b) Complete the sentences below by writing **Earth**, **Moon** or **Sun**.

The is a source of light.

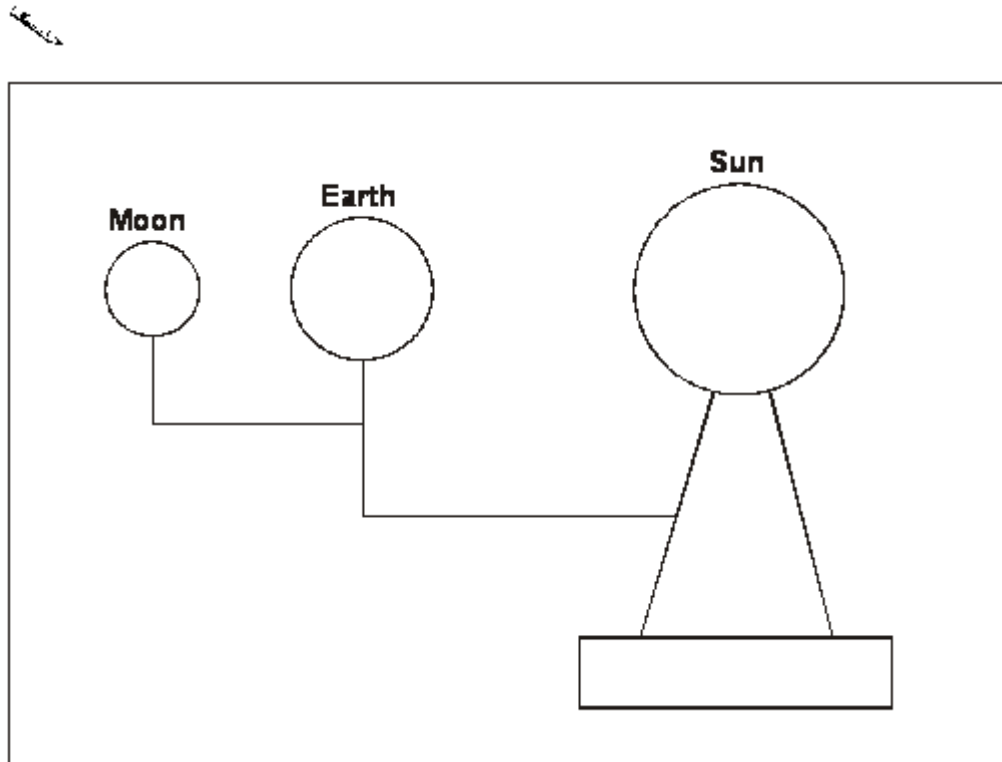
The orbits the Sun.

The has an orbit of 28 days.

2 marks

(c) The diagram below shows the model of the Earth, Moon and Sun.

On the diagram, shade in the part of the **Earth** where it is night.



1 mark

(d) Describe how the Earth moves to cause day and night.

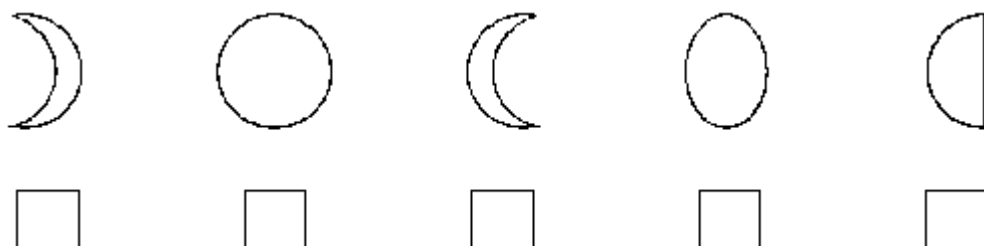
.....
.....

1 mark

(e) Which diagram shows the correct shape of the Moon?

Tick **ONE** box.

1 mark



/5

Q3. Planet Earth

(a) A long time ago, people thought that the Earth was flat.

Now we know that planet Earth is not flat.

What shape is planet Earth?

.....

1 mark

(b) A long time ago, scientists had different ideas about the Sun and the Earth.

Now we know that only some of their ideas are true.

Tick **ONE** box in each row on the table below to say whether each idea is true or false.

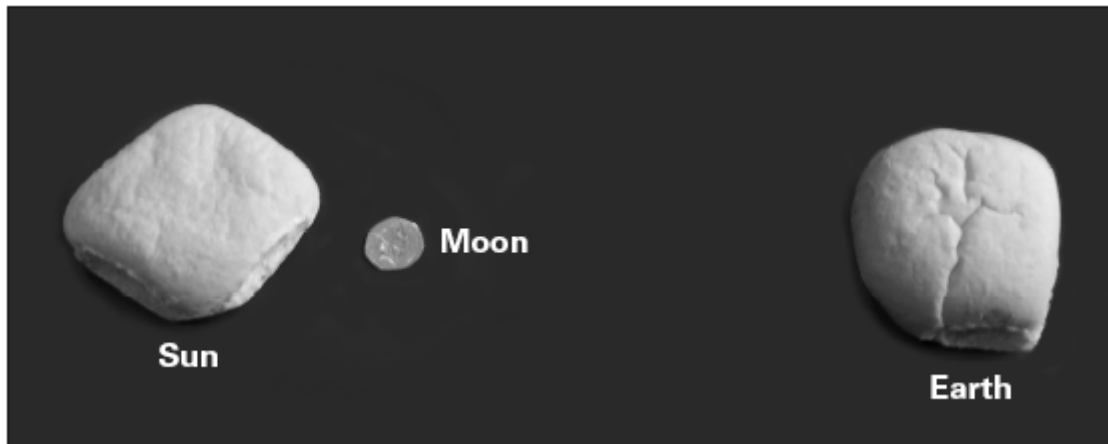
| Idea | True | False |
|---|------|-------|
| The Earth goes around the Sun. | | |
| The Earth spins on its axis. | | |
| The Sun is hidden behind the Moon at night. | | |
| The Sun orbits the Earth. | | |
| Night is dark because thick clouds cover the Sun. | | |

2 marks

/3

Q4. The Sun

- (a) George makes a model of the Sun, Earth and Moon. He uses two bread rolls and a 50p coin.



Tick **THREE** boxes to show some changes that would make George's model more accurate.



The Sun should be bigger.

The Moon should be the same size as the Earth.

The Sun should be a sphere.

The Moon should be an oval.

The Sun should orbit the Earth.

The Moon should be closer to the Earth.

2 marks

/2

Q5. Orbits

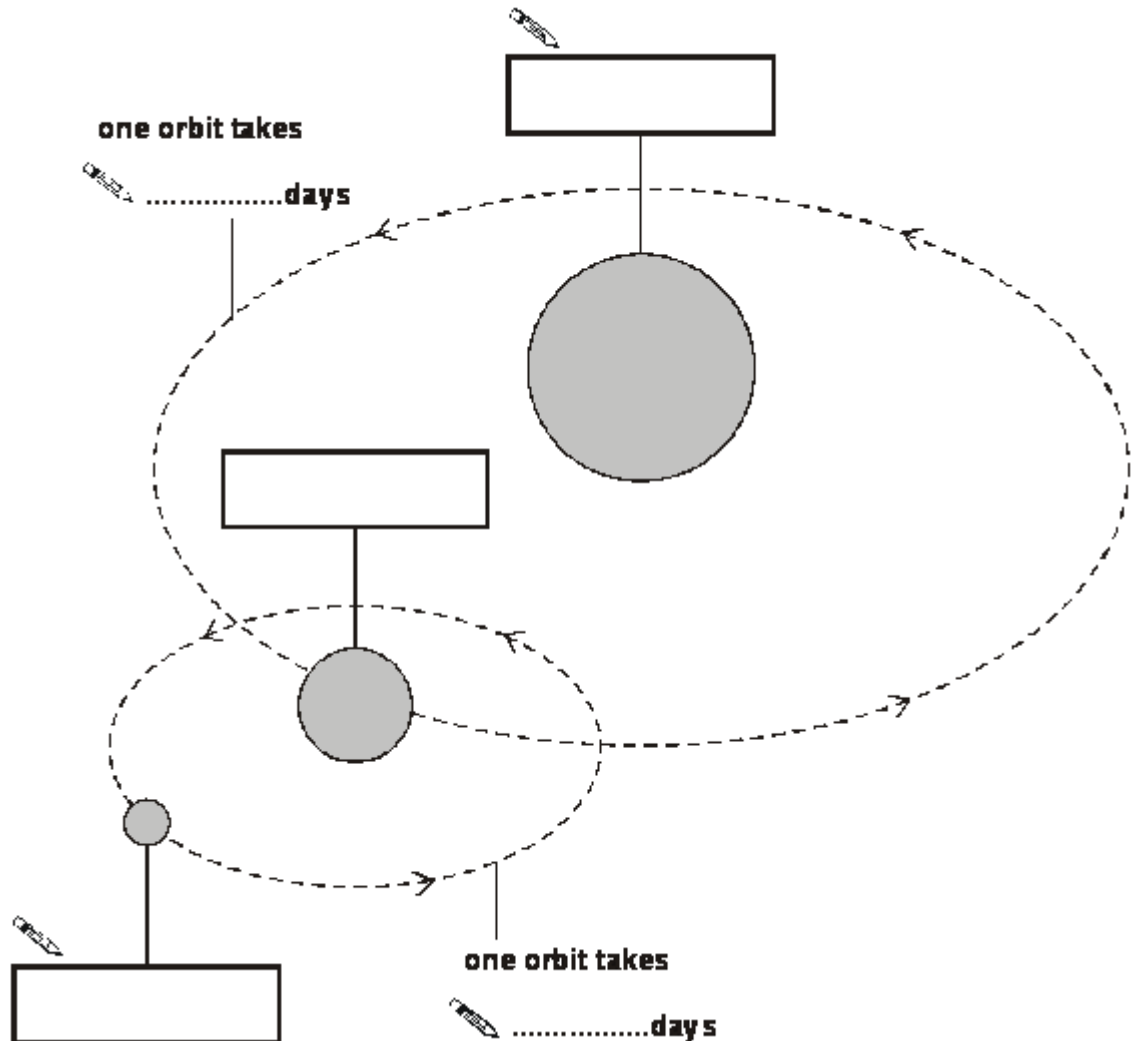
(a) The diagram shows the Sun, Earth and Moon (not drawn to scale).

Write Sun, Moon and Earth in the correct boxes on the diagram.

1 mark

(b) Two orbits are shown.

Write the time taken, in days, for each orbit.



2 marks

NOW GO BACK AND READ EACH QUESTION AGAIN.

CHECK YOUR ANSWERS!

/3

If you want to go further you could research and produce a poster (including diagrams) explaining why we have seasons. <https://www.dkfindout.com/uk/earth/seasons/>