

# Minibeasts



Minibeasts are animals with no backbones. They are all around us, such as spiders, beetles, snails, worms, butterflies and much more.

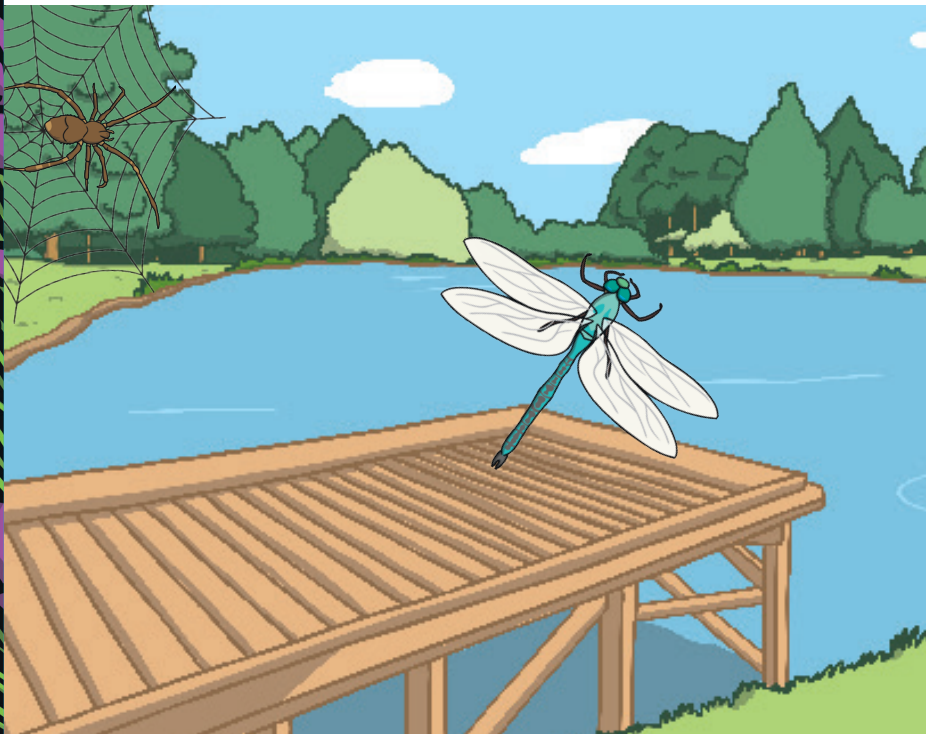


## In the Garden

A garden is a great place to find minibeasts. If you look closely around flowering plants you might see honeybees and bumblebees.

## In Ponds and Rivers

Some minibeasts, found near ponds or rivers, can be born in water and grow so they are able to fly and live on land. You might find dragonflies or even spiders living near ponds or rivers that grow into four-winged insects that live in tall trees near water.



## Did you know?

A peacock butterfly has eye-shaped patterns on its wings to fool other animals who may want to eat it.



# Questions

1. What are minibeasts? Tick **one**.

- animals that have hair or fur
- animals with no backbones
- animals with no legs

2. Where can you find minibeasts? Tick **two**.

- in the garden
- inside the body
- in ponds and rivers

3. What minibeasts can you see near flowering plants? Tick **one**.

- worms and beetles
- honeybees and bumblebees
- spiders and dragonflies

4. Where can dragonflies live? Tick **one**.

- underground
- in tall trees
- underwater

5. Which two minibeasts might you find near a pond or river? Tick **two**.

- bumblebees
- dragonflies
- spiders

# Answers

1. What are minibeasts? Tick **one**.

- animals that have hair or fur
- animals with no backbones
- animals with no legs

2. Where can you find minibeasts? Tick **two**.

- in the garden
- inside the body
- in ponds and rivers

3. What minibeasts can you see near flowering plants? Tick **one**.

- worms and beetles
- honeybees and bumblebees
- spiders and dragonflies

4. Where can dragonflies live? Tick **one**.

- underground
- in tall trees
- underwater

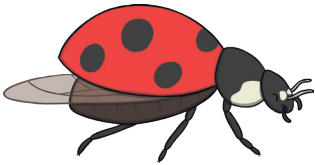
5. Which two minibeasts might you find near a pond or river? Tick two.

- bumblebees
- dragonflies
- spiders

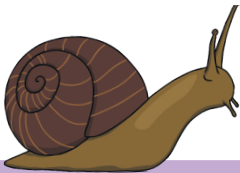
# Minibeasts



Minibeasts are a group of small creatures known as **invertebrates**. There are hundreds and thousands of minibeasts all around us, such as spiders, beetles, snails, worms, butterflies and much more.



Some minibeasts have a long body and lots of legs such as caterpillars and millipedes. Some have wings such as butterflies and bees, while others make slime to move underground easily such as earthworms. There are even some minibeasts that are coloured to so they can hide on leaves and branches.



## Did you know?

A peacock butterfly has eye-shaped patterns on its wings to fool other animals who may want to eat it.



## Where Do Minibeasts Live?

Minibeasts can be found in many different habitats - under logs and rocks, in soil beneath our feet, in piles of leaves, grass, ponds, bushes, trees or even in tiny cracks in walls.



## In the Garden

A garden is a great place to find minibeasts. If you look closely around flowering plants you might see honeybees and bumblebees. Bees are very important to the life of a garden because they move pollen which allows plants to grow seeds and fruit.



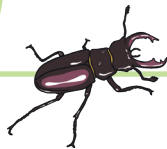
### In Ponds and Rivers

Minibeasts can be found in ponds and rivers. These animals could spend their lives in or near water, many begin their lives in water and grow to be able to fly or live on land. You might find dragonflies or even spiders living near ponds or rivers. Dragonflies grow into four-winged insects that live in tall trees near water.

### Minibeast Record Holders

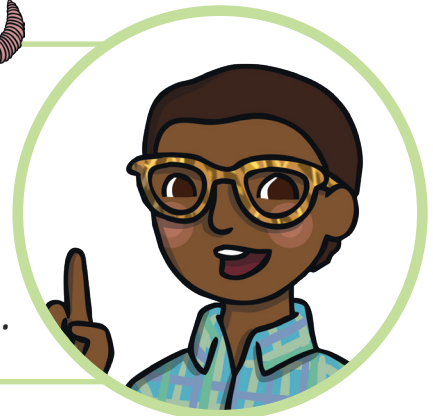


Which minibeasts hold the record for being the biggest in the UK?



The largest stag beetle recorded was 8.5cm long.

The largest earthworm ever recorded in the UK was 40cm long, the size of a small snake.



### Glossary

invertebrates - a creature with no backbone

# Questions

1. Match the sentences.

Minibeasts are a group of

spiders, beetles, snails, worms, butterflies and many more.

If you look closely around flowering plants you might see

small creatures known as invertebrates.

There are hundreds and thousands of minibeasts all around us, such as

honeybees and bumblebees.

2. Complete the sentences below:

Minibeasts can be found in many different \_\_\_\_\_ - under logs and rocks, in \_\_\_\_\_ beneath our feet, in \_\_\_\_\_ of leaves, grass, ponds, bushes, trees or even in \_\_\_\_\_ cracks in walls.

3. What do bees move to allow plants to grow seeds and fruit?

---

4. Where do many minibeasts that are found near ponds and rivers start life? Tick **one**.

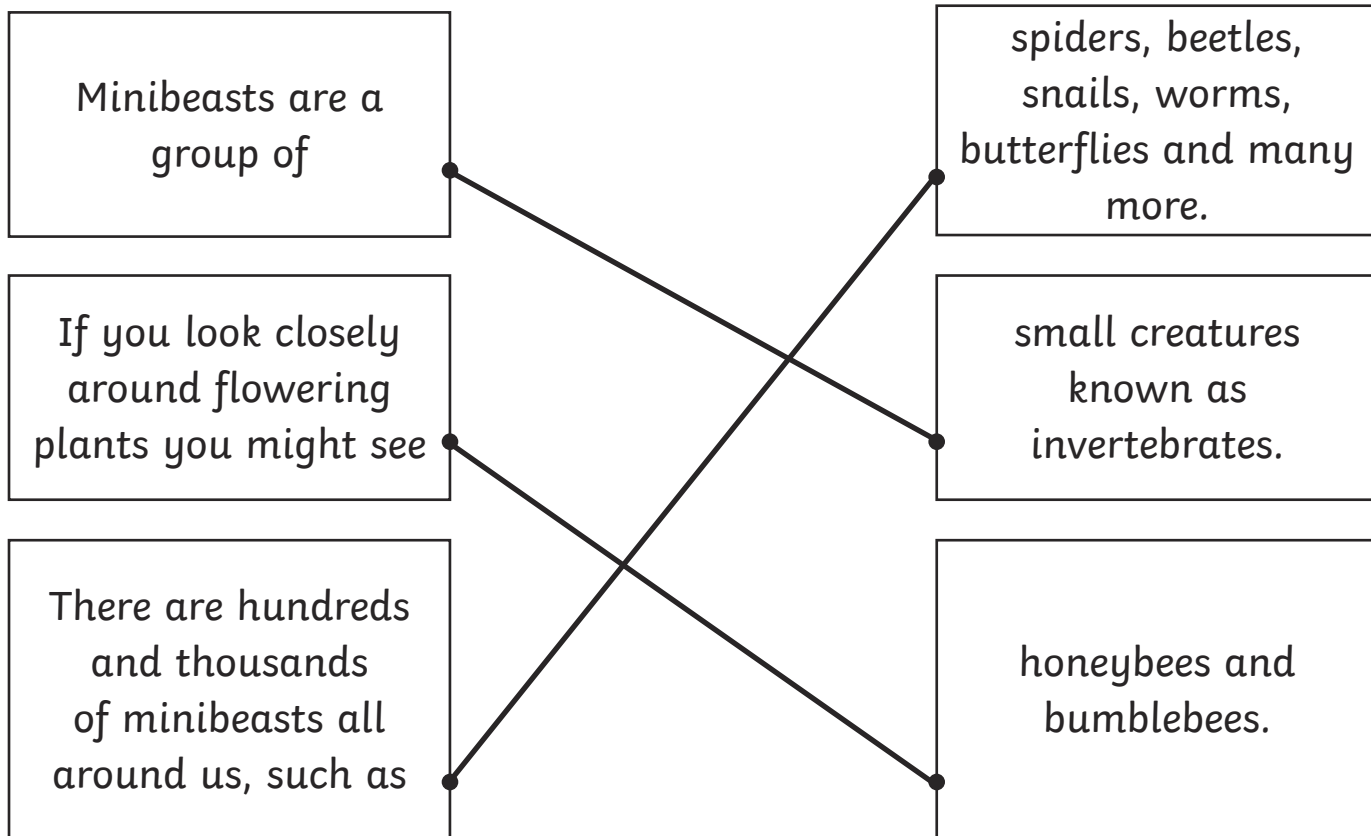
- in a tree
- underground
- in water

5. How many wings do dragonflies have? Tick **one**.

- two
- four
- six

# Answers

1. Match the sentences.



2. Complete the sentences below:

Minibeasts can be found in many different **habitats** - under logs and rocks, in **soil** beneath our feet, in **piles** of leaves, grass, ponds, bushes, trees or even in **tiny** cracks in walls.

3. What do bees move to allow plants to grow seeds and fruit?

**pollen**

4. Where do many minibeasts that are found near ponds and rivers start life? Tick **one**.

- in a tree
- underground
- in water



5. How many wings do dragonflies have? Tick **one**.

- two
- four
- six

# Minibeasts

Minibeasts are a group of small creatures known as **invertebrates**. There are hundreds and thousands of minibeasts all around us, such as spiders, beetles, snails, worms, butterflies and much more. In fact, there are around 25,000 different types living in the UK.

Some minibeasts have a long body and lots of legs such as caterpillars and millipedes. Some have wings such as butterflies and bees, while others make slime to move underground easily such as earthworms. There are even some minibeasts that are coloured so they can hide on leaves and branches.



## Did you know?

A peacock butterfly has **adapted** eye-shaped patterns on its wings to fool **predators** who might want to eat it.



## Where Do Minibeasts Live?

Minibeasts can be found in many different habitats - under logs and rocks, in soil beneath our feet, in piles of leaves, grass, ponds, bushes, trees or even in tiny cracks in walls.



## In the Garden

A garden is a great place to find minibeasts. If you look closely around flowering plants you might see honeybees and bumblebees. Bees are very important to the life of a garden. They collect nectar to make honey by hopping from flower to flower and they also collect and move pollen which allows plants to grow seeds and fruit.





### In Ponds and Rivers

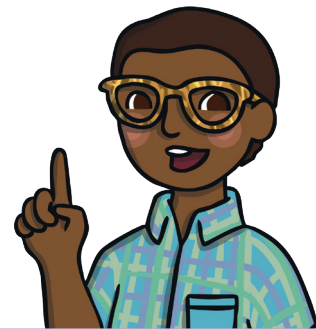
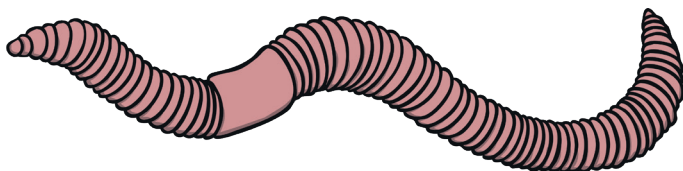
Minibeasts can be found in ponds and rivers. These creatures can spend their lives in or near water, starting out as **larvae** born in water which grow to be able to fly or live on land. You might find dragonflies or even spiders living near ponds or rivers.

### Minibeast Record Holders

#### Which minibeasts hold the record for being the biggest in the UK?

Minibeasts come in so many different shapes and sizes. If a garden or park has a hedge around it, you might be lucky enough to find a stag beetle. The largest stag beetle recorded in the UK was 8.5cm long.

The largest earthworm ever discovered in the UK was 40cm long, the size of a small snake. His name was Dave and he is kept in the Natural History Museum.



### Glossary

invertebrates - a creature with no backbone

larvae - a baby invertebrate

adapted - changed over time

predators - an animal that hunts and eats other animals for food.

# Questions

1. What are invertebrates?

---

2. Complete the sentences below:

Some \_\_\_\_\_ have a long body and lots of legs such as caterpillars and millipedes. Some have wings such as \_\_\_\_\_ and bees, while others make slime to move \_\_\_\_\_ easily such as earthworms. There are even some minibeasts that are \_\_\_\_\_ so they can hide on leaves and branches.

3. **Find** and **copy** a word that means **a place an animal or plant would live**.

---

4. Match the sentences.

Bees are very important

different shapes and sizes.

You might find dragonflies or even spiders living

different habitats - under logs and rocks, in soil beneath our feet, in piles of leaves, grass, ponds, bushes, trees or even in tiny cracks in walls.

Minibeasts come in so many

to the life of a garden.

Minibeasts can be found in many

near ponds or rivers.

5. What is the record for the biggest stag beetle found in the UK? Tick **one**.

- 9.5cm  
 7.5cm  
 8.5cm

6. Is a slug a minibeast? Explain how you know.

---

---

---

# Answers

1. What are invertebrates?

**Creatures with no backbones.**

2. Complete the sentences below:

Some **minibeasts** have a long body and lots of legs such as caterpillars and millipedes. Some have wings such as **butterflies** and bees, while others make slime to move **underground** easily such as earthworms. There are even some minibeasts that are **coloured** so they can hide on leaves and branches.

3. **Find and copy** a word that means **a place an animal or plant would live.**

**habitat**

4. Match the sentences.

Bees are very important	different shapes and sizes.
You might find dragonflies or even spiders living	different habitats - under logs and rocks, in soil beneath our feet, in piles of leaves, grass, ponds, bushes, trees or even in tiny cracks in walls.
Minibeasts come in so many	to the life of a garden.
Minibeasts can be found in many	near ponds or rivers.

5. What is the record for the biggest stag beetle found in the UK? Tick **one**.

- 9.5cm  
 7.5cm  
 8.5cm

6. Is a slug a minibeast? Explain how you know.

Pupils' own response, such as; A slug is a minibeast because it is an invertebrate, has a long body and uses slime to move around easily. A slugs' habitat can also be in piles of leaves.