



# End of Key Stage 2 Assessment



## Information meeting

# Information Meeting – What will we cover?

- To give an overview of what SATs are and when they are.
- To provide an overview of each assessment and share some example questions.
- To outline the arrangements for SATs week itself.
- To discuss how and when results will be communicated.
- To share resources and ideas on how to prepare for the assessments.





# What are 'SATs'?

'SATs' are the Standardised Assessment Tests that are given to children at the end of Key Stage 2.

The tests form part of the statutory assessment arrangements for pupils at the end of Key Stage 2 and are based on the relevant sections of the national curriculum statutory programme of study at Key Stage 2.

The 'end of key stage' assessments assess learning objectives covered in Years 3, 4, 5 and 6.

They also help measure the progress pupils have made from one key stage to another, assess school performance and produce national performance data.



Standards  
& Testing  
Agency

# When will they take place?

The SATs take place over four days, starting on Monday 13th May ending on Thursday 16th May.

Date	Activity
Monday 13 May 2024	English grammar, punctuation and spelling papers 1 and 2
Tuesday 14 May 2024	English reading
Wednesday 15 May 2024	Mathematics papers 1 and 2
Thursday 16 May 2024	Mathematics paper 3



# When and how are the SATS completed?

- The tests take place during normal school hours, under exam conditions.
- Children are not allowed to talk to each other from the moment the assessments are handed out until they are collected at the end of the test.
- After the tests are completed, the papers are sent away to be marked **externally**.
- The results are then sent to school in July.



# Grammar, Punctuation and Spelling: Monday 13<sup>th</sup> May

Paper 1 focuses on all three elements (grammar, punctuation and spelling or GPS). The paper lasts for 45 minutes.

Paper 2 consists of a spelling test only and takes approximately 15 minutes.

	G1	G2	G3	G4	G5	G6	G7
Qu.	Grammatical terms / word classes	Functions of sentences	Combining words, phrases and clauses	Verb forms, tenses and consistency	Punctuation	Vocabulary	Standard English and formality

# Grammar, Punctuation and Spelling: Paper 1 (GPS)

4

Which sentence must end with a **question mark**?

Tick **one**.

Shall we go round the fitness trail in the park

☐

We could go tomorrow if you like

☐

What I really like is the rope bridge

☐

Let me know what you would like to do

☐

37

Complete the sentence below with an appropriate **subordinating conjunction**.

\_\_\_\_\_ it rained all afternoon, the picnic was a success.

32

The teacher wants to write a sign to remind children to turn the lights off.

Write the **command** that the teacher might use on the sign.  
Remember to punctuate your answer correctly.

\_\_\_\_\_



# Grammar, Punctuation and Spelling: Paper 2 (spelling)

## Spelling

1. There was a \_\_\_\_\_ in the field.
2. I kept in \_\_\_\_\_ with my old friends when we moved.
3. The questions were \_\_\_\_\_ from one to ten.

Paper 1: 50 marks

Paper 2: 20 marks

Out of 70 overall

In 2023 – 36/70 = ‘expected standard’

## 2023 Spelling script

**Spelling 1:** The word is **lamb**.

There was a **lamb** in the field.

The word is **lamb**.

**Spelling 2:** The word is **touch**.

I kept in **touch** with my old friends when we moved.

The word is **touch**.

**Spelling 3:** The word is **numbered**.

The questions were **numbered** from one to ten.

The word is **numbered**.



# Reading: Tuesday 14<sup>th</sup> May

Content domain reference		
2a	give / explain the meaning of words in context ★	(5)
2b	retrieve and record information / identify key details from fiction and non-fiction ★	(19)
2c	summarise main ideas from more than one paragraph	
2d	make inferences from the text / explain and justify inferences with evidence from the text ★	(22)
2e	predict what might happen from details stated and implied	
2f	identify / explain how information / narrative content is related and contributes to meaning as a whole	
2g	identify / explain how meaning is enhanced through choice of words and phrases	
2h	make comparisons within the text	

The reading test lasts for 60 minutes.

The test is designed to measure if the children's comprehension of age-appropriate reading material meets the national standard.

There are three different set texts for children to read.

These could be any combination of non-fiction, fiction and/ or poetry.

8

*My heart began beating fast* (page 6).

**Find** and **copy two** other words from the same paragraph which mean that something is quick.

1. \_\_\_\_\_

2. \_\_\_\_\_

2 marks

1

Veronika's football team has two names.

What are the **two** names?

1. \_\_\_\_\_

2. \_\_\_\_\_

1 mark



33

Think about the whole text.

What impressions do you get of Penelope as she describes her unusual experience?

Give **two** impressions, using evidence from the text to support your answer.

1. \_\_\_\_\_  
\_\_\_\_\_  
\_\_\_\_\_
2. \_\_\_\_\_  
\_\_\_\_\_  
\_\_\_\_\_

3 marks

Out of 50 overall

In 2022 – 29/50 = ‘expected standard’

In 2023 24/50 = ‘expected standard’

# Reading Test Top Tips!

**AWIA** - Answer what it asks!

- Tick **two**
- Copy **one** word

Use the reading material – not your own knowledge of the subject.

Reading stamina – increasing how long you can read/ focus/ concentrate for without stopping.

I can read long & strong to increase my **STAMiNA!** I can go the whole way!

SOAL: BY:

30									
28									
26									
24									
22									
20									
18									
16									
14									
12									
10									
8									
6									

{Minutes read without getting distracted}

{Dates}

{Credited by Andrea Knight ©2014}



# Maths: Wednesday 15<sup>th</sup> May and Thursday 16<sup>th</sup> May

The maths assessments consist of three tests.

- Paper 1: Arithmetic (30 minutes) – Wednesday 15<sup>th</sup> May
- Paper 2: Reasoning (40 minutes) – Wednesday 15<sup>th</sup> May
- Paper 3: Reasoning (40 minutes) – Thursday 16<sup>th</sup> May



# Maths Paper 1 (Arithmetic)

The arithmetic paper has a total of **40 marks** and lasts for **30 minutes**.

The test covers the four operations (addition, subtraction, multiplication, division, including order of operations requiring BIDMAS), percentages of amounts and calculating with decimals and fractions.

**32**

$$2\frac{1}{2} - \frac{2}{3} =$$

1 mark

**33**

$$\begin{array}{r} 4078 \\ \times \quad 67 \\ \hline \end{array}$$

Show  
your  
method

2 marks



# Maths Paper 1 (Arithmetic)

Example 1 mark questions:

**6**  $6.48 + 8.6 =$

$$\begin{array}{r} 6.48 \\ + 8.60 \\ \hline 15.08 \\ 1 \end{array}$$

$15.08$

☐ 1 mark

**15**  $4,172 = 596 \times 7$

$$\begin{array}{r} 596 \\ \times 7 \\ \hline 4172 \\ 64 \end{array}$$

☐ 1 mark

**27**  $15\% \text{ of } 3,200 =$

$$\begin{array}{l} 10\% \text{ of } 3,200 = 320 \\ 5\% \text{ of } 3,200 = 160 \\ 15\% \text{ of } 3,200 = 480 \end{array}$$

$480$

☐ 1 mark

**35**  $6 + 4 \div 2 =$

$$\begin{array}{l} 4 \div 2 = 2 \\ 6 + 2 = 8 \end{array}$$

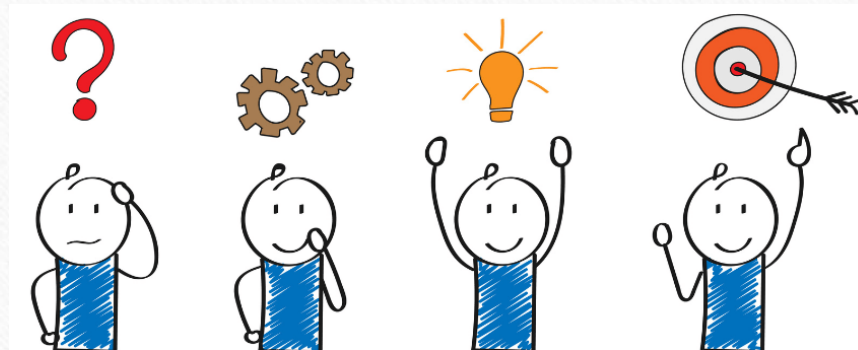
$8$

☐ 1 mark

# Maths Papers 2 and 3 (Reasoning)

Paper 2 will take place on Wednesday 15<sup>th</sup> May and paper 3 will take place on Thursday 16<sup>th</sup> May. These tests have a total of 35 marks each and lasts for 40 minutes each.

These papers require children to demonstrate their mathematical knowledge and skills, as well as their ability to solve problems and their mathematical reasoning.





6

Emma has a 5 litre bag of compost.



She uses 2.75 litres.

How much compost does Emma have left?

litres

1 mark

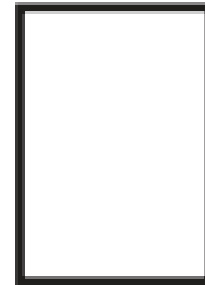
7

In a race, Ali completes a swim, a run and a bicycle ride.

The swim is  $\frac{1}{10}$  of the total distance.

The run is  $\frac{3}{10}$  of the total distance.

What fraction of the total distance is the **bicycle ride**?



1 mark

Out of 110 overall

In 2023 –  $56/110$  = ‘expected standard’

# During SATs week

- Children will be encouraged to get to school for 8:45am.
- They will be offered breakfast consisting of toast (with butter or jam) and a drink (squash or water).
- The children will take their test in their own classroom unless you have been informed of alternative arrangements.
- Tests will be completed in the morning and afternoon lessons will take place as usual.





# During SATs week

- Encourage plenty of sleep throughout the week - especially as the week progresses.
- Check that your child does not have any electronic devices that they intend to take into the test. They are not allowed to wear 'fitbits' or 'smart' watches so it is best for these to stay at home.



# When will I receive my child's SATs results?

- The SATs are sent away to be externally marked.
- You will receive your child's SATs results in July before the end of the academic year.
- Teachers will also award your child a teacher assessment judgement in writing and science.



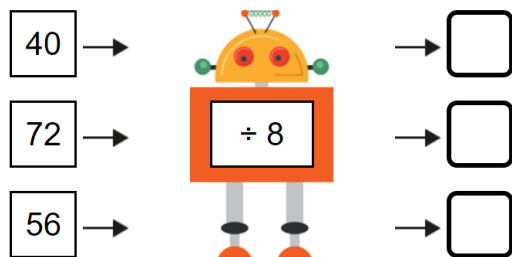
# How can you support your child at home?

- Continuing to support your child with their CGP Homework.
- Reading at home – building up that reading stamina!
- Revising words from the Year 3/4 and Year 5/6 word lists.
- Using Spelling Frame to practise Year 3/4 and Year 5/6 spelling rules.
- Using Mathematics in the ‘real world’, e.g. using money, timetables, cooking and calculating time differences.

**Spellingframe**



**2** Look at the **dividing** machine.



Drag the correct numbers to the answer boxes.

3

4

5

6

7

8

9

10

1 mark

New 36 Reset Mark 0/36 Answers Print ☐

1	$1561 + 329 + 665 =$ <input type="text"/>	<input type="radio"/>	19	$241 \times 78 =$ <input type="text"/>	<input type="radio"/>
2	$803 \div 1 =$ <input type="text"/>	<input type="radio"/>	20	$79.87 \times 1000 =$ <input type="text"/>	<input type="radio"/>
3	$10 +$ <input type="text"/> $= 142$	<input type="radio"/>	21	$3\frac{3}{4} + 1\frac{1}{4} =$ <input type="text"/>	<input type="radio"/>
4	$4400 \div 2 =$ <input type="text"/>	<input type="radio"/>	22	$\frac{4}{5}$ of 40 = <input type="text"/>	<input type="radio"/>
5	<input type="text"/> $+ 50 = 678$	<input type="radio"/>	23	$6 - 1.137 =$ <input type="text"/>	<input type="radio"/>
6	$6.66 + 1.1 =$ <input type="text"/>	<input type="radio"/>	24	$\frac{1}{5} \div 4 =$ <input type="text"/>	<input type="radio"/>
7	$560 \div 8 =$ <input type="text"/>	<input type="radio"/>	25	$\frac{1}{6} + \frac{1}{5} =$ <input type="text"/>	<input type="radio"/>
8	$940 \div 5 =$ <input type="text"/>	<input type="radio"/>	26	$42 - 3.467 =$ <input type="text"/>	<input type="radio"/>
9	$8967 - 2615 =$ <input type="text"/>	<input type="radio"/>	27	25% of 5400 = <input type="text"/>	<input type="radio"/>
10	$1239 \times 10 =$ <input type="text"/>	<input type="radio"/>	28	3% of 3000 = <input type="text"/>	<input type="radio"/>
11	$350 \div 7 =$ <input type="text"/>	<input type="radio"/>	29	$1656 \div 92 =$ <input type="text"/>	<input type="radio"/>
12	$3 \times 10 \times 12 =$ <input type="text"/>	<input type="radio"/>	30	40% of 224 = <input type="text"/>	<input type="radio"/>
13	$1000 \div 10 =$ <input type="text"/>	<input type="radio"/>	31	$\frac{4}{5} - \frac{1}{2} =$ <input type="text"/>	<input type="radio"/>
14	$90000 - 900 =$ <input type="text"/>	<input type="radio"/>	32	$4\frac{1}{2} - \frac{2}{3} =$ <input type="text"/>	<input type="radio"/>
15	<input type="text"/> $= 358 \times 3$	<input type="radio"/>	33	$2832 \times 65 =$ <input type="text"/>	<input type="radio"/>
16	$9.93 \div 10 =$ <input type="text"/>	<input type="radio"/>	34	$11 - 4\frac{5}{7} =$ <input type="text"/>	<input type="radio"/>
17	$264 \div 11 =$ <input type="text"/>	<input type="radio"/>	35	$24 + 4 \times 6 =$ <input type="text"/>	<input type="radio"/>
18	$\frac{1}{3} + \frac{3}{6} =$ <input type="text"/>	<input type="radio"/>	36	$\frac{2}{5} \times 350 =$ <input type="text"/>	<input type="radio"/>

## Y6 Revision Club

This is open to all Y6 pupils.

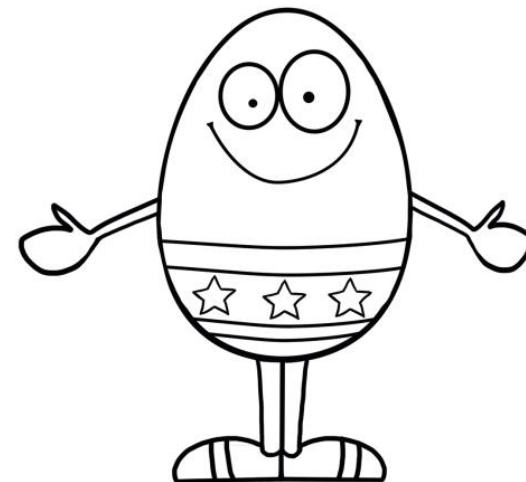
It will take place after school on  
Thursdays 3.30pm-4.15pm – please see  
the separate permission letter  
detailing the specific dates.

Easter Holiday revision work

## KS2 SAT Revision

# Ten for Ten

Easter Practice Booklet  
**MATHEMATICS**



EGG-SPECTED STANDARD

Name: \_\_\_\_\_

# Information Meeting – What we have covered?

- ✓ To give an overview of what SATs are and when they are.
- ✓ To provide an overview of each assessment and share some example questions.
- ✓ To outline the arrangements for SATs week itself.
- ✓ To discuss how and when results will be communicated.
- ✓ To share resources and ideas on how to prepare for the assessments.

